

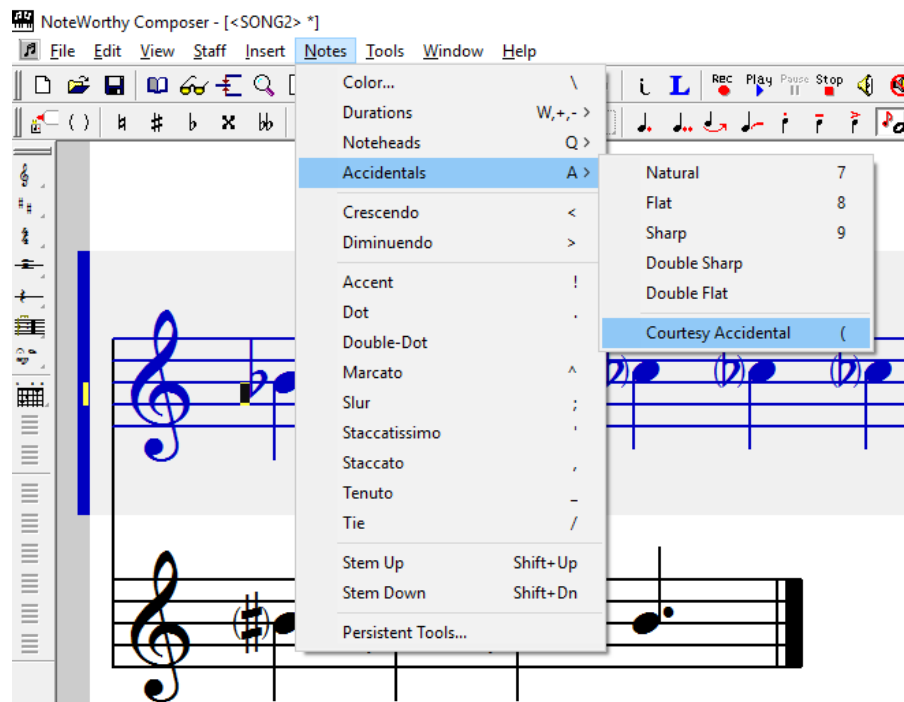
NoteWorthy Composer Version 2.75a New Features



The following is an overview of some features added in *NoteWorthy Composer* Version 2.75a from Version 2.75.

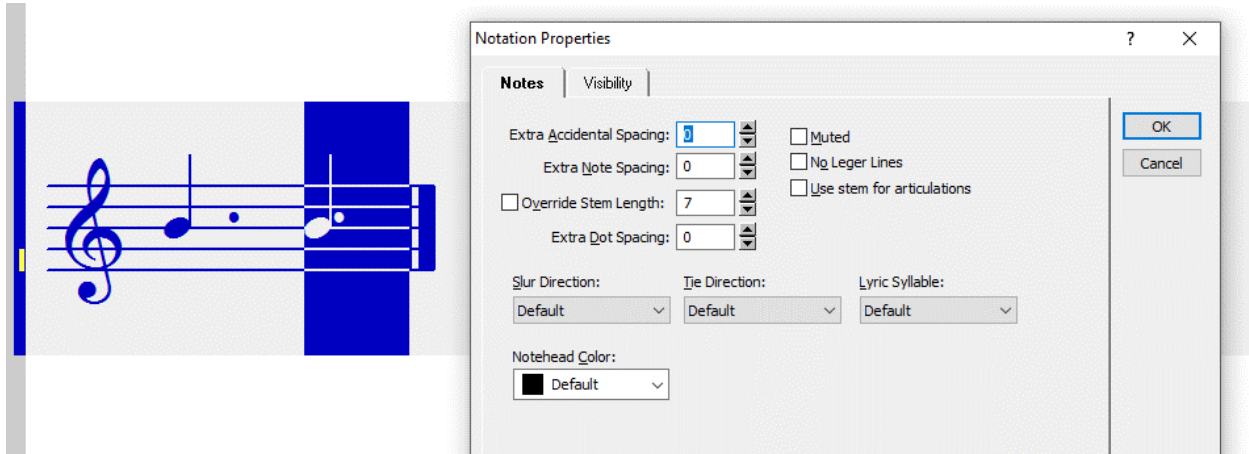
Courtesy Accidentals

The command is found in Notes: Accidentals, Courtesy Accidental. The quick key is (the open parentheses mark. A keyboard short cut is also available and can be added with View: Toolbars... To add a Courtesy Accidental in a score, choose the accidental and the courtesy (with the menu – one at a time, with the tool bar icons, or quick keys) then Enter the note. Or select (highlight) a placed note, activate the accidental and the courtesy (or just the courtesy if the accidental is already there).



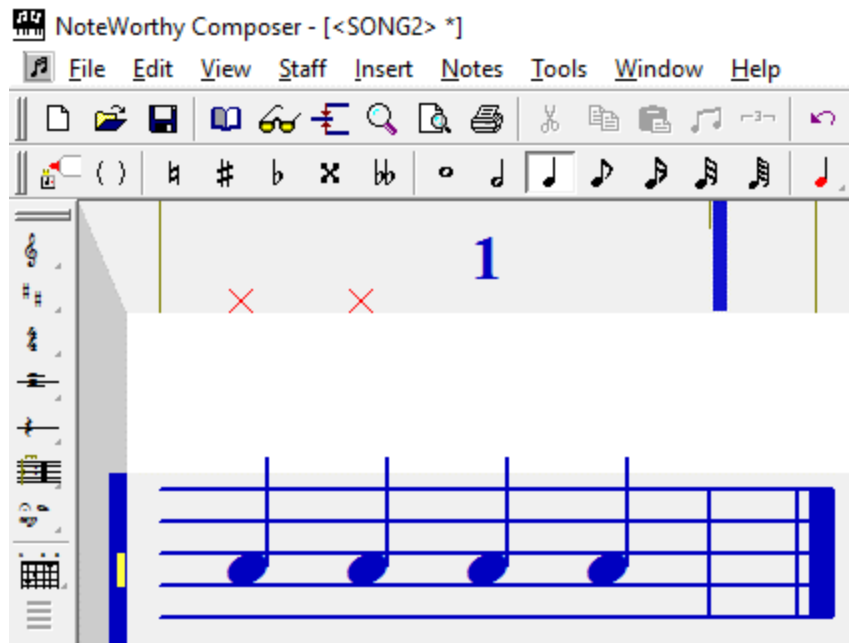
Extra Dot Spacing (Horizontal Control and Hide)

The first note has been edited to set Extra Dot Spacing to 1.4. The next note has been selected and then the Alt+Enter keys were pressed. To set the spacing, change Extra Dot Spacing. To have the dot hidden, set it to -1.



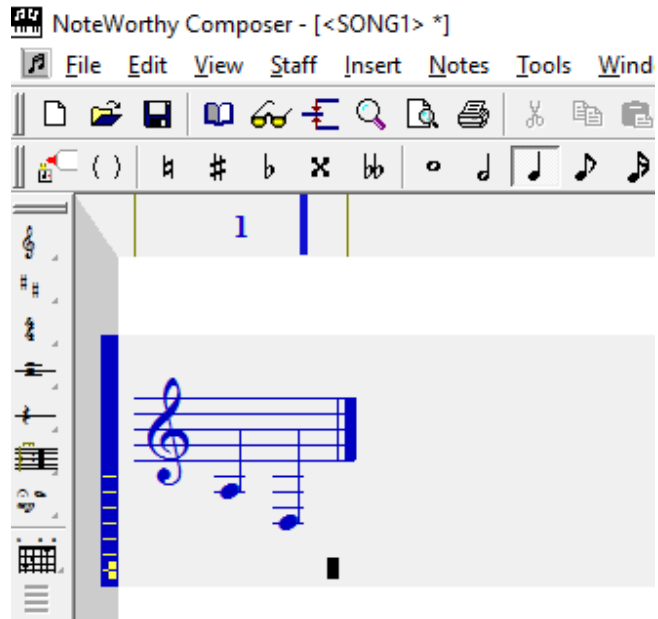
Bar Number Panel Muted Note Indicator

In the image below, the first two notes are muted and the last two notes are not muted. View: Show Bar Number Panel to turn on the area. To mute a note, select it, press Alt+Enter, under the Notes tab, check Muted.



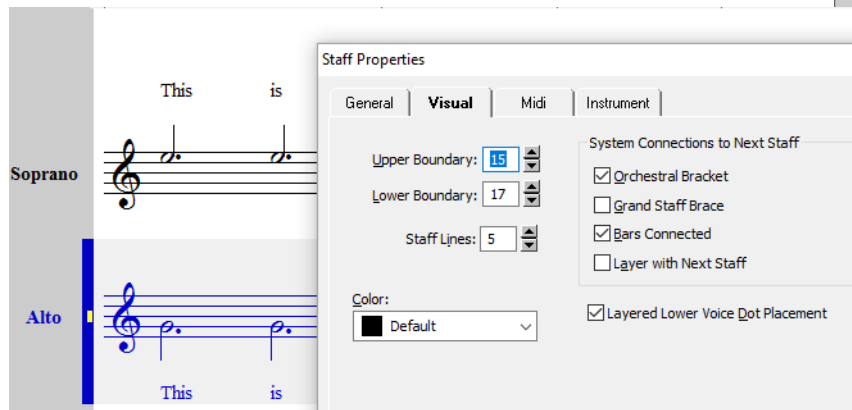
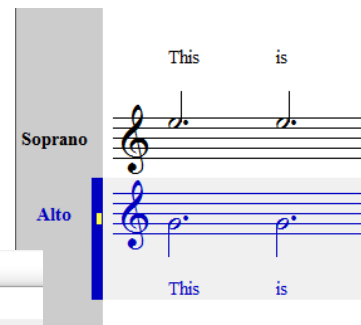
Position Indicator, with Leger Lines, in Label Panel

With View: Show Label Panel checked, a yellow indicator will appear in the panel indicating the staff line location of the insertion point.



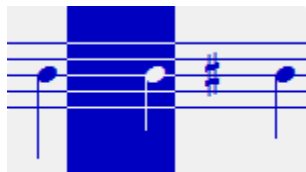
When Using Staff Layering - Lower Voice Dot Placement Option

Before this setting, dots were placed in the middle or upper side (image on right). With the new setting found in Staff Properties, the dots are on the lower side for the lower voice (image below). The top staff must be layered with the lower staff for this to be implemented.



Range and Shortcuts – Stem Length, Note Spacing, Accidental Spacing

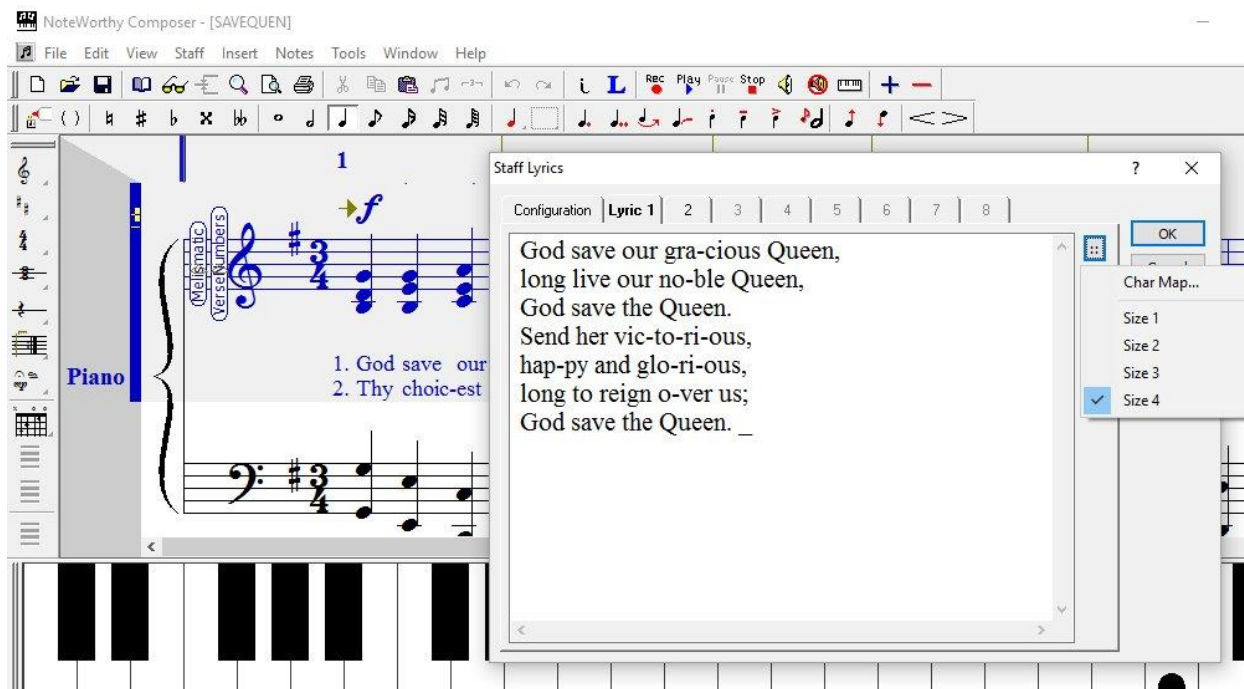
Expanded range, fractional tenths and shortcuts added when notes are selected for



Stem lengths (Alt+↑), Note spacing (Alt+↔), Accidental spacing (Alt+Shift+↔)

Lyric Editor Size

To change the size of lyrics in the editor, click on the 



Note: Verse Numbers were added in Version 2.75 using Insert: Object, VerseNumbers.ms

Information in this document is subject to change without notice. No part of this document may be reproduced in any means for any purpose without the express written permission of *NoteWorthy Software, Inc.*

Copyright © 2017 *NoteWorthy Software, Inc.* (Documentation)
All rights reserved.

NoteWorthy Composer is a trademark of *NoteWorthy Software, Inc.* Other brand and product names are trademarks or registered trademarks of their respective holders.

Document Number NWC-NF2.75a